

MANUAL
SPIDERNET
MAIL-LINK



HPF GMBH – BO CHEMNITZ

CONTENTS

1 Introduction..... 3

2 Requirements 3

3 Startup procedure 3

 3.1 Initial startup 3

 3.2 Startup with an available configuration 4

4 Function..... 5

 4.1 Send an e-mail..... 5

 4.2 Adding a new e-mail group 5

 4.3 Duplicate an e-mail group 6

 4.4 Delete an e-mail group..... 6

 4.5 Read available e-mail groups with an additional program 6

 4.6 Available SPIDER variables 7

5 Support..... 7

 5.1 Start a program with parameters..... 7

 5.2 Error codes 9

REGISTER OF ILLUSTRATIONS

ill. 1 Summary..... 2

ill. 2 Settings in the index-tab "SPIDER settings" 3

ill. 3 Settings in the index-tab "EMail settings" 3

ill. 4 Add button..... 4

ill. 5 Set the e-mail connection..... 5

ill. 6 Start a file with a parameter via command-line 6

ill. 7 Create a shortcut 7

ill. 8 Open the features of a shortcut 7

ill. 9 Add parameters to a shortcut 8

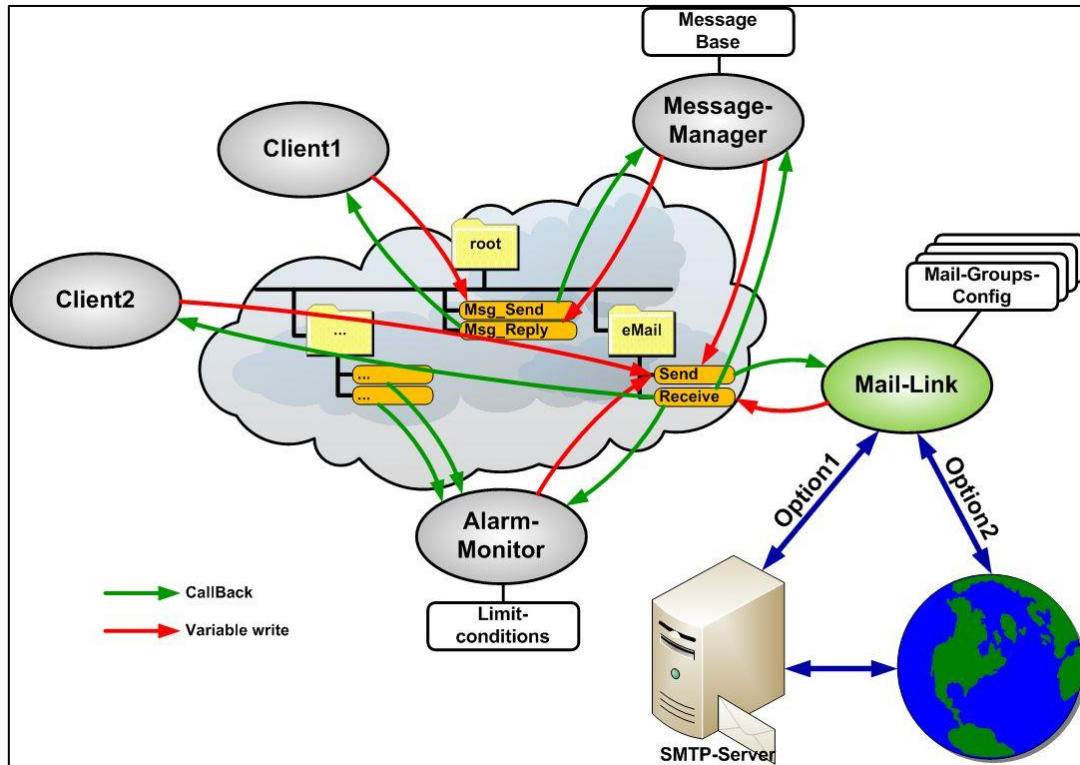
LIST OF TABLES

Table 1 Variables in SPIDER 7

Table 2 Error codes..... 9

1 INTRODUCTION

Mail-Link is a tool which allows you to send notifications from clients as e-mail to any e-mail address in the surrounding area of the SPIDER automation. In case of an accident you can for example automatically send an e-mail to a specific addressee. Therefor Mail-Link provides a variable in SPIDER on which the sender writes an e-mail. The mail will be sent immediately to one or more stated phone numbers.



ill. 1 Summary

2 REQUIREMENTS

There has to be the Microsoft.NET Framework 3.5 installed on the host PC in order to perform Mail-Link. In addition to that a SPIDER has to be active in the network which can be accessed by Mail-Link. An internet connection must be available so that Mail-Link can leave messages.

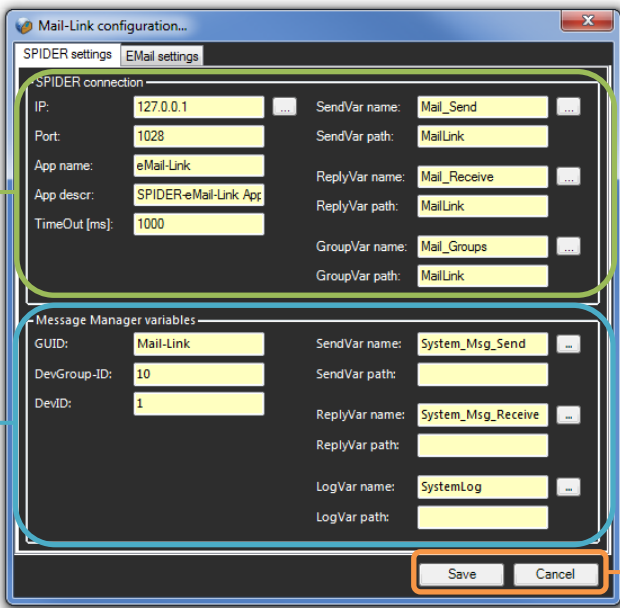
3 STARTUP PROCEDURE

3.1 INITIAL STARTUP

When performing the initial startup you have to start Mail-Link in the configuration mode to create a new configuration for the program. Therefor you have to start the file Mail_Link.exe with the parameter “-Config” (as seen in chapter 5.1 Start a program with parameters).

Afterwards you have to call up the configuration menu via right mouse click on the Tray Icon → *change configuration* and make the following settings.

1. In the index-tab "SPIDER settings"



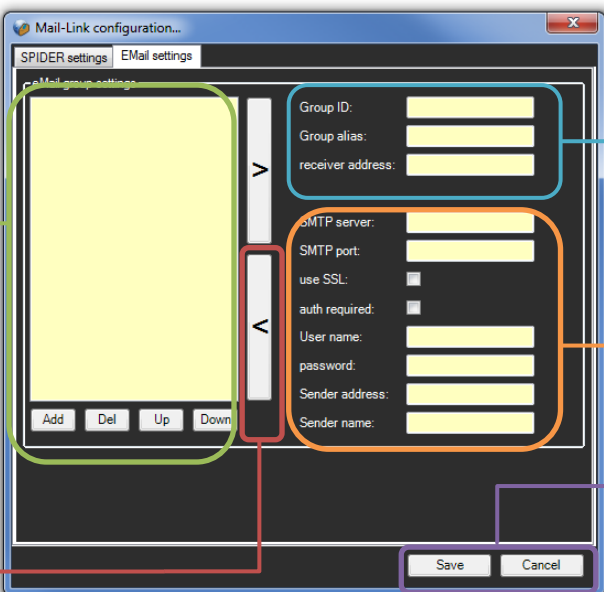
1. Adjust the SPIDER connection. Allocate the variable name and variable path for SPIDER

2. Adjust the Message Manager settings. Allocate the variable name and variable path for SPIDER

3. Save the changes by clicking the Save button

ill. 2 Settings in the index-tab "SPIDER settings"

2. In the index-tab "Email settings"



1. Add a new group by clicking the Add button

4. Mark the group and use the "<" button to overwrite with the inserted data

2. Allocate the group name and the addressee numbers (separated via ";")

3. Adjust the e-mail account information

5. Save by clicking the Save button

ill. 3 Settings in the index-tab "EMail settings"

3.2 STARTUP WITH AN AVAILABLE CONFIGURATION

If a configuration was already created, you can start Mail-Link by double clicking on the file *Mail_Link.exe*.

4 FUNCTION

4.1 SEND AN E-MAIL

You can initiate e-mails via the sending variable in SPIDER after you configure Mail-Link. Therefore you have the following options for composing the sending string:

```
<any ID>~<groupID>~<reference>~<message>
```

example: 0~1~test~This is a test message

This message will be sent with the settings of groups with the ID 1. Everyone receives the message if you stated more than one addressee in the group.

```
<anyID>~<group name>~<reference>~<message>
```

example: 0~test group~test~This is a group message

This message will be sent with the settings of groups named "testgroup". Everyone receives the message if you stated more than one addressee in the group.

```
<any ID>~<addressee 1;addressee2;...addresseeN>~<reference>~<message>
```

example: 0~john@doe.com;joe@bloggs.com~test~Test message for 2 addressees

In this way the message will be sent with the settings of groups with the ID 0 to both addressees whom you stated in the sending string.

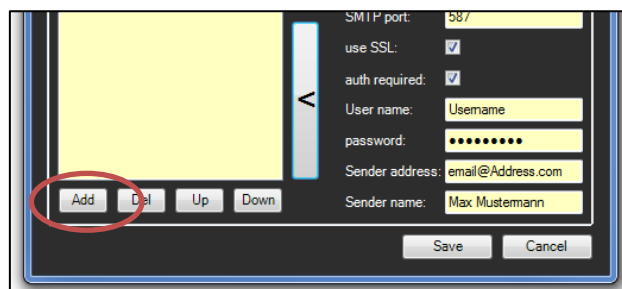
The tilde (~) functions as separator in all sending methods.

You can read the reply variable after the message is sent or written in the sending variable. The reply variable contains information about the sending process.

4.2 ADDING A NEW E-MAIL GROUP

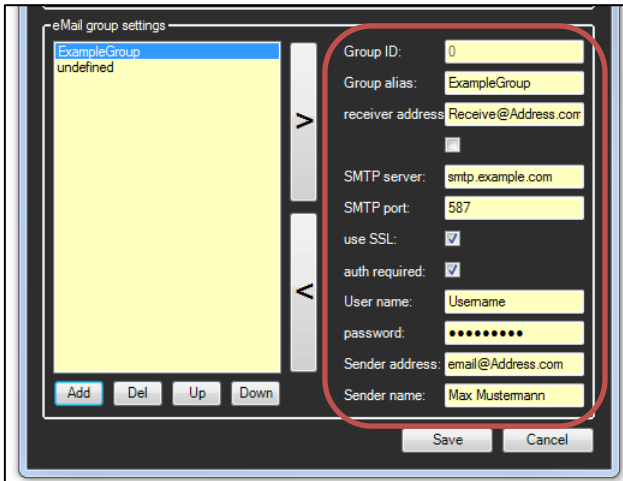
Various clients can use Mail-Link in the Spider automation network to send e-mails. You can create groups in Mail-Link to allow your clients to have specific sender data (e.g. phone number or name of the sender).

You have to click the *Add* button in the configuration menu (as seen in ill. 5) in order to create a group. In the next step the word *undefined* appears in the selection window.



ill. 4 Add button

Please enter all group-specific values into the right column (cf. ill. 6).



ill. 5 Set the e-mail connection

Mark the word *undefined* and click the “<” arrow. The group is created if you see *alias* instead of *undefined* in the assigned groups. Confirm your settings by clicking the *Save* button.

4.3 DUPLICATE AN E-MAIL GROUP

You can use the duplicate function if you want to create a new group consisting of the data of an available group. Therefore you have to select the available configuration and click the “>” button in the selection window. The data of the available configuration will be uploaded into the right column. You are now free to change the data as often as you want.

Click the *Add* button to create a new configuration and mark it. Use the “<” arrow to write the data on the new configuration and confirm your entry by clicking on the *Save* button. The duplication is now complete.

4.4 DELETE AN E-MAIL GROUP

You can delete an e-mail group by marking the group in the selection window and clicking the *Del* button

4.5 READ AVAILABLE E-MAIL GROUPS WITH AN ADDITIONAL PROGRAM

A group variable is provided in order to inform another program about the available e-mail groups in Mail-Link. The variable string consists of the available e-mail groups, separated via tilde (~). This variable is simply to be read by another program. If the string is empty, you can activate the variable writing of Mail-Link with the following step. Open the context menu by clicking the right mouse button on the Tray Icon and select *Publish GroupConfig to SPIDER*

4.6 AVAILABLE SPIDER VARIABLES

Mail-Link registers the following variables in SPIDER:

Name	Typ	Syntax	Bemerkung
Sendvar*	String	As seen in chapter 4.1 Send an e-mail	Sending variable
ReplyVar*	String	<ID>~<error code>~<Error description>	Contains an error report
GroupVar*	String	<group1>~<group2>~...~<groupN>~0	Contains available e-mail groups

Table 1 Variables in SPIDER

* The user can allocate the variable name.

5 SUPPORT

5.1 START A PROGRAM WITH PARAMETERS

This section supports you in starting a program with command-line parameters. Therefor you have two options. Option one is to start the program directly via command-line with the parameters and option two is to use a shortcut.

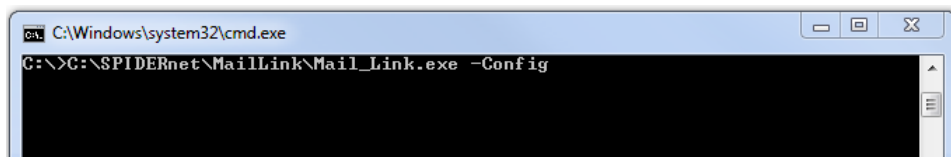
Start via command-line

Step 1

Start the command-line by clicking “Start → Run” or pushing the *Windows* button + *R*. Enter “cmd” into the pop-up window and confirm by clicking the *Enter* button. The command-line appears.

Step 2

Here you have to set the path including the executable file. The parameter can be added after a blank space (as seen in ill. 7)



ill. 6 Start a file with a parameter via command-line

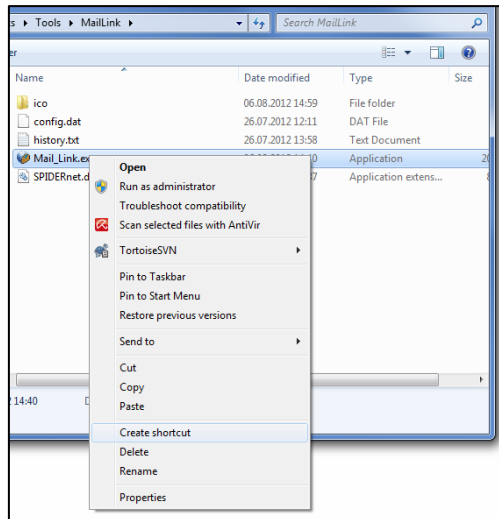
Step 3

Confirm by clicking the *Enter* button. The program will be started with the assigned parameter.

Start via shortcut

Step 1

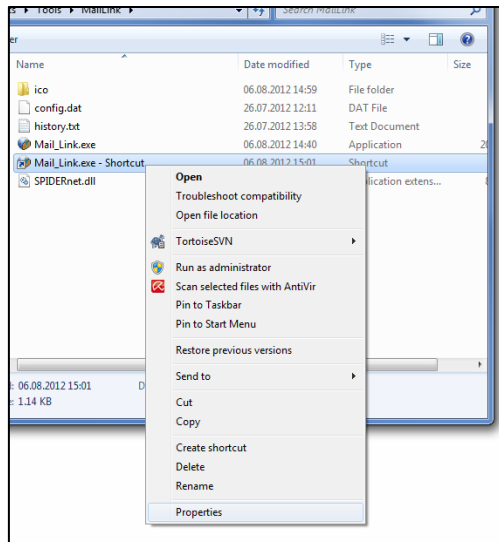
Create a shortcut of the executable file. Therefore click the file with the right mouse button and select “Create shortcut”.



ill. 7 Create a shortcut

Step 2

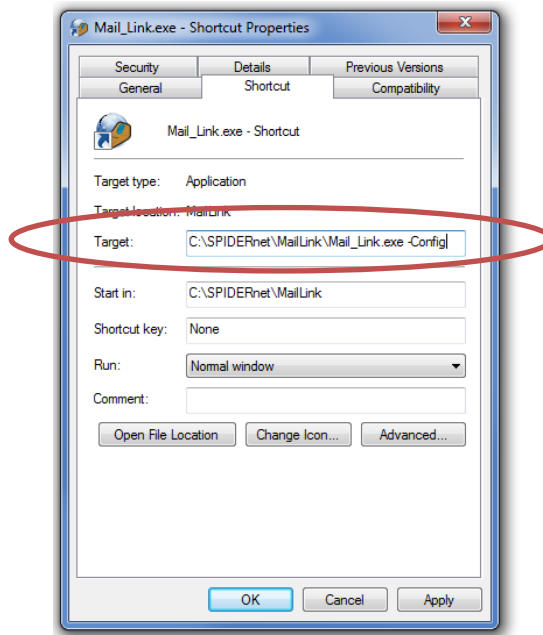
Click the created shortcut with the right mouse button and select “Properties”.



ill. 8 Open the features of a shortcut

Step 3

You have to add the parameter to the „Target” in the “Shortcut” index-tab (as seen in ill. 10).



ill. 9 Add parameters to a shortcut

Step 4

Confirm your entry by clicking the *OK* button and start the program via double clicking the shortcut.

5.2 ERROR CODES

The error codes of the reply variable have the following meaning:

Error code	Description
0	No error
1	Generic error
2	Generic sending error
3	Wrong command format
4	Group ID does not exist

Table 2 Error codes